



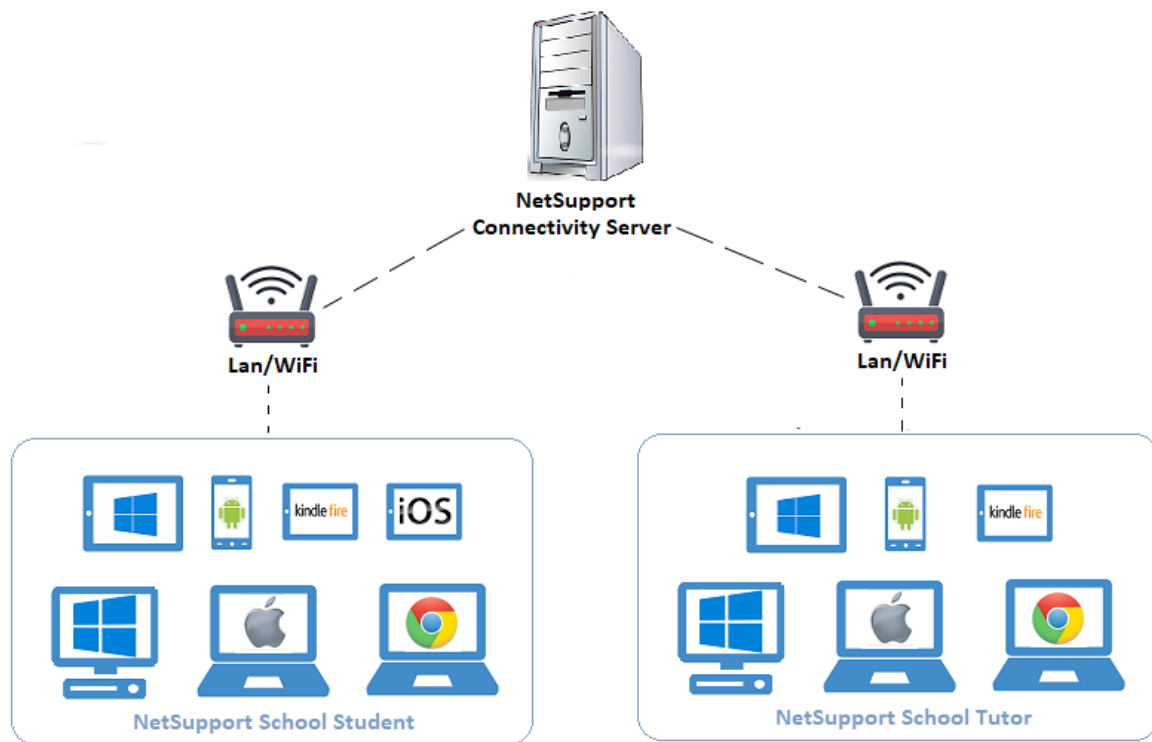
Using a NetSupport Name & Connectivity Server



Overview

A NetSupport Name & Connectivity Server (also known as the 'Gateway' in older versions) is provided as an optional component within the NetSupport School Windows installation setup.exe file.

Its purpose is to provide a simple and reliable method of locating and connecting a NetSupport School Tutor to NetSupport School Student devices in LAN/wireless network environments.



Benefits of implementing a Name & Connectivity Server (NCS):

- Resolves connectivity issues.
- Negates the need to browse the network to locate Student devices.
- Reduces the time to locate the Student devices.
- Reduces the need to configure and maintain browsing broadcast or IP address range entries in the Tutor/Tech Console configuration.
- The Tutor/Tech Console uses the current IP address registered by the Student device on the NCS when establishing connections, resolving potential DNS resolution issues.

Scenarios where a Name & Connectivity Server can be used to resolve connection issues are:

- Large networks where Student devices may not respond in time to be located using the standard NetSupport School browse function.
- Networks with UDP restrictions making it impossible to perform a UDP browse to locate Student devices.
- Networks with multiple subnets or VLANs where maintaining the Tutor/Tech Console browse settings becomes an issue.

How it works

Once implemented, the Student devices on start-up will register the machine name, IP address, MAC address, room name and logged on user name with the Name & Connectivity Server.

In turn, the Tutor/Tech Console will request the Student device details from the Name & Connectivity Server instead of performing a browse across the network to find the Student devices to connect to.

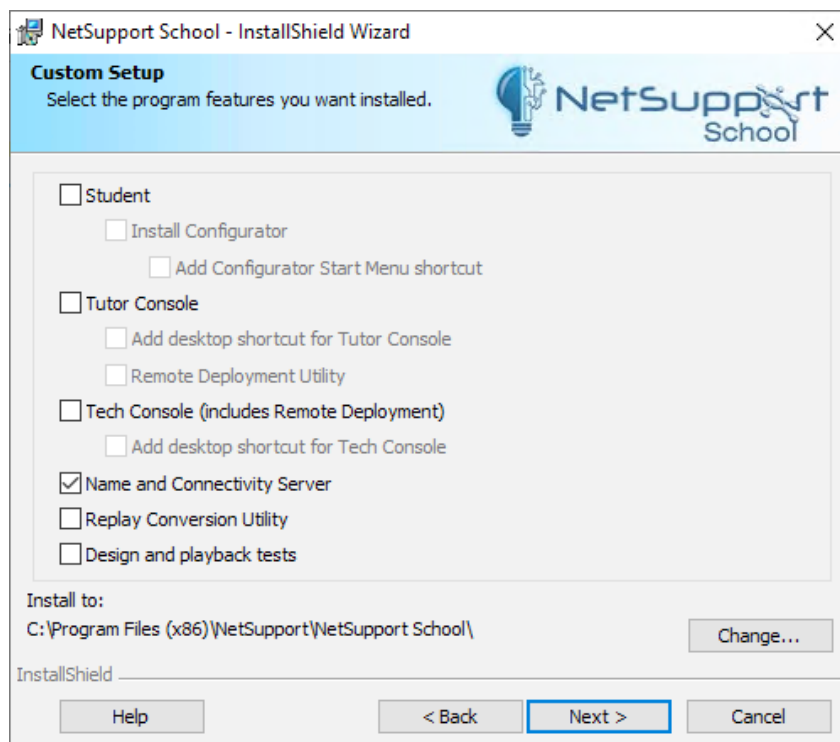
Installing a Name & Connectivity Server

The Name & Connectivity Server (NCS) is designed to be installed and run on a physical or virtual machine running a Windows Server operating system. The server must be accessible from all Tutor/Tech Console and Student devices on the network.

The server the NCS is installed on should have a static IP address to prevent any server connection issues within a DHCP environment.

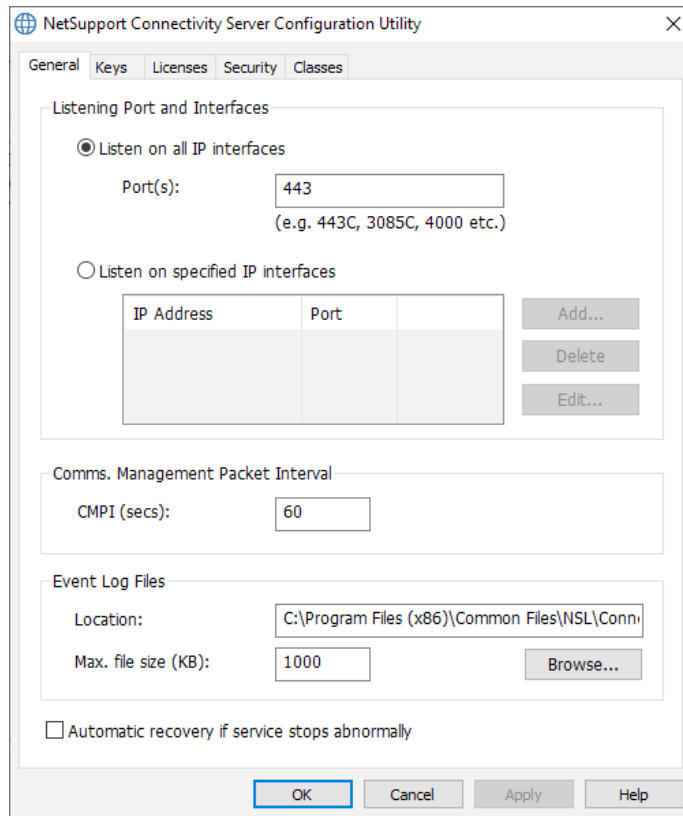
The NCS can be installed as a standalone component (or along with other NetSupport School components). In the Custom Setup screen, select the **Name and Connectivity Server** option.

At the end of the installation, the Name & Connectivity Server configuration window will launch.



Configuring the Name & Connectivity Server

General tab



Listen on all IP interfaces

By default, the installed Connectivity Server component uses the local IP address(es) and communicates using port 443 - this can be changed if required.

Note: On a machine that also has the Web Server (IIS) Role added, the Connectivity Server port will need to be changed to the NetSupport registered port 3085.

Listen on specified IP interfaces

If the Connectivity Server machine has multiple network cards installed, you can add the specific IP address to use. Click **Add** and enter the required IP address.

CMPI (Communications Management Packet Interval)

When configured for Connectivity Server connections, the Student device confirms its availability by periodically polling the Connectivity Server. By default, a network packet is sent every 60 seconds, but you can change this if required.

Note: Once the Connectivity Server is active, the CMPI value also controls how long it takes for the Student devices to be removed from the list of available machines shown on the Clients tab of the 'Connectivity Server Console' after it is no longer available on the network.

Event log files

Connectivity Server activity during an active session is recorded in a text file with a default file name of **GWxxx.log**. Log files can be useful for checking which Student devices and Tutor/Tech Consoles have connected to the Connectivity Server.

Location:

By default, the GWxxx.log files are stored in the C:\Program Files (x86)\Common Files\NSL\Connectivity Server folder. The **Browse** button can be used to specify an alternative folder path.

Max file size (KB):

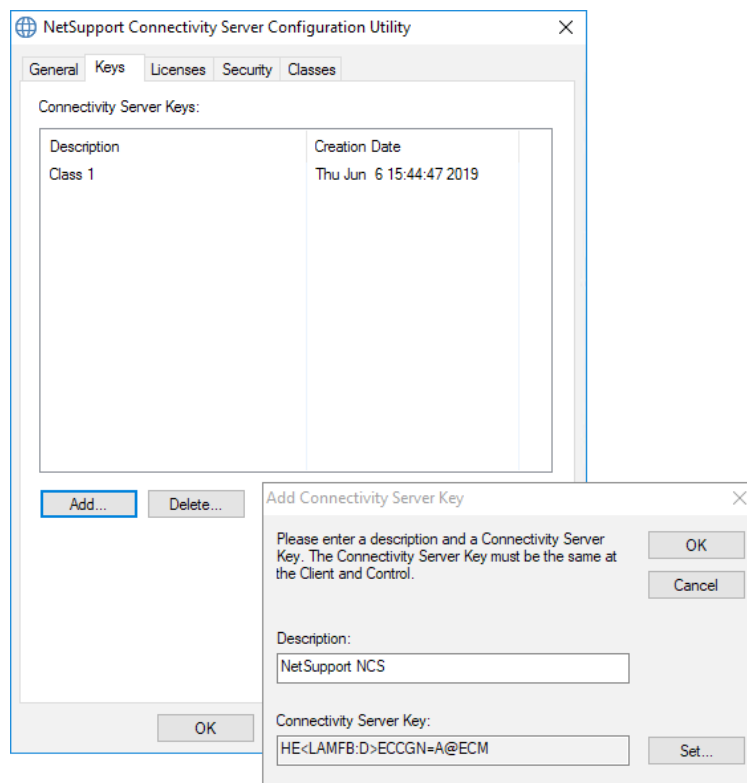
To limit the size of the log file, you can specify a maximum file size. When the limit is reached, a new file will be created, for example GW001.log, GW002.log, GW003.log etc.

Note: For changes to the log file settings to take effect the Gateway32 service on the machine will need to be restarted.

Automatic recovery if service stops abnormally

By default, the Gateway service will automatically recover if there is an abnormal shutdown.

Keys tab

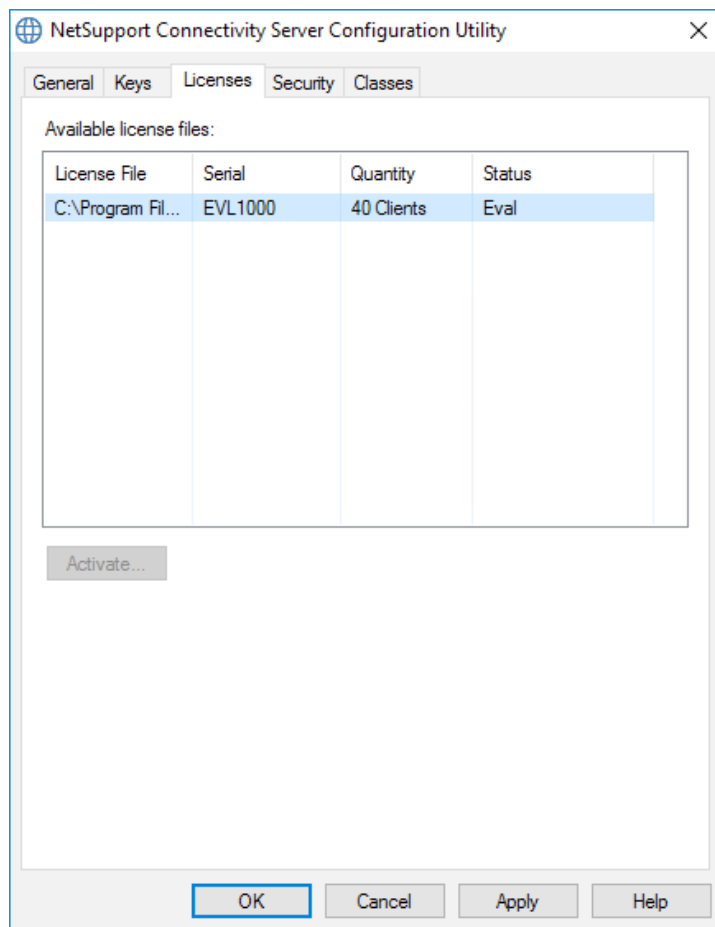


Access to a Connectivity Server is protected by use of a Connectivity Server key (security key). The Connectivity Server will not accept connections from a NetSupport School Tutor, Tech Console or Student device unless the matching key is also configured on those devices.

The key is therefore a pre-requisite when configuring the Name & Connectivity Server settings.

1. Click **Add** and enter a suitable description for the key.
2. Click **Set** and enter your chosen Connectivity Server key. An encrypted value will be displayed. For accuracy, enter the key twice. The key must be between 8 and 15 characters and can contain upper and lower case letters, numbers and/or special characters. Click **OK**. (It may help to make a note of the key). As mentioned, the same key must also be used when configuring both the NetSupport School Tutor and Student devices to communicate with the Server.
3. The key description and creation date will now be displayed in the Connectivity Server Keys list.

Licenses tab



The Licenses tab will show the details of the NetSupport School licence(s) that have been applied to the Name & Connectivity Server.

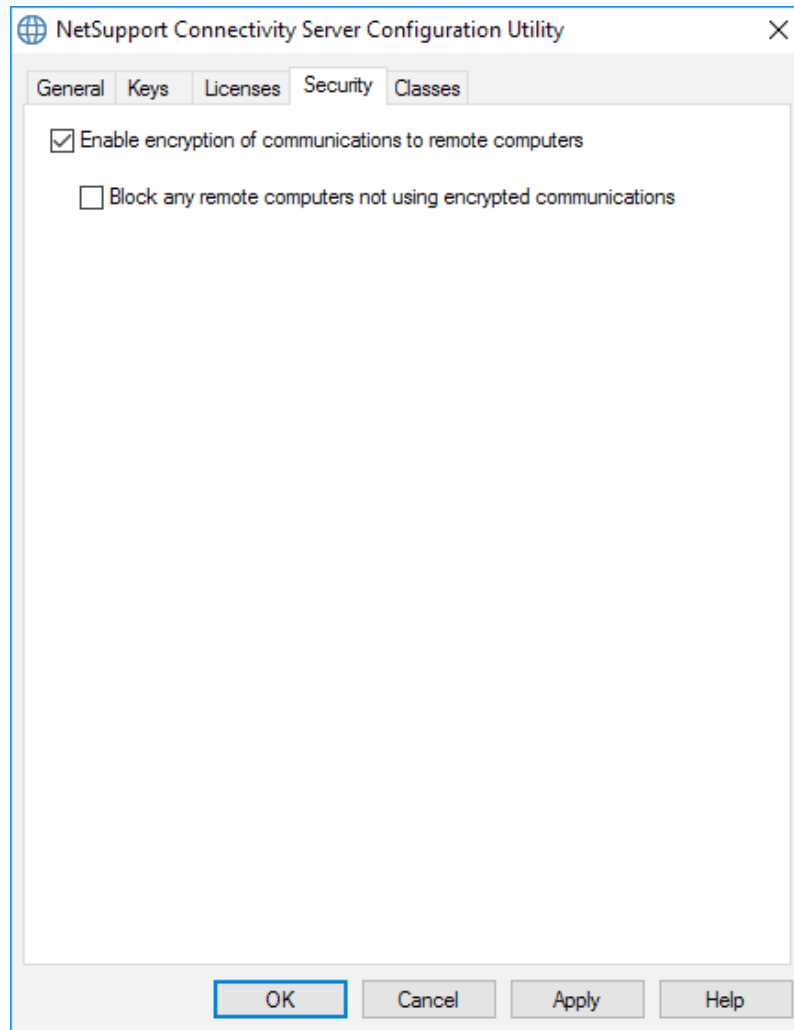
When the Name & Connectivity Server starts on the machine, it will attempt to automatically activate the NetSupport School licence over the internet. If the automatic activation fails for any reason, the licence can be manually activated using the **Activate** button.

Multiple NetSupport School licences can be applied to the Name & Connectivity Server by renaming the additional NSM.LIC files and placing them in the NetSupport School installation directory: C:\Program Files (x86)\NetSupport\NetSupport School.

The NSM.LIC files will need to be renamed sequentially so that they are read by the Name & Connectivity Server – for example NSM.LIC, NSM-1.LIC, NSM-2.LIC, NSM-3.LIC etc.

All applied NetSupport School licence files will be listed on the Licenses tab and will require activating on the Name & Connectivity Server.

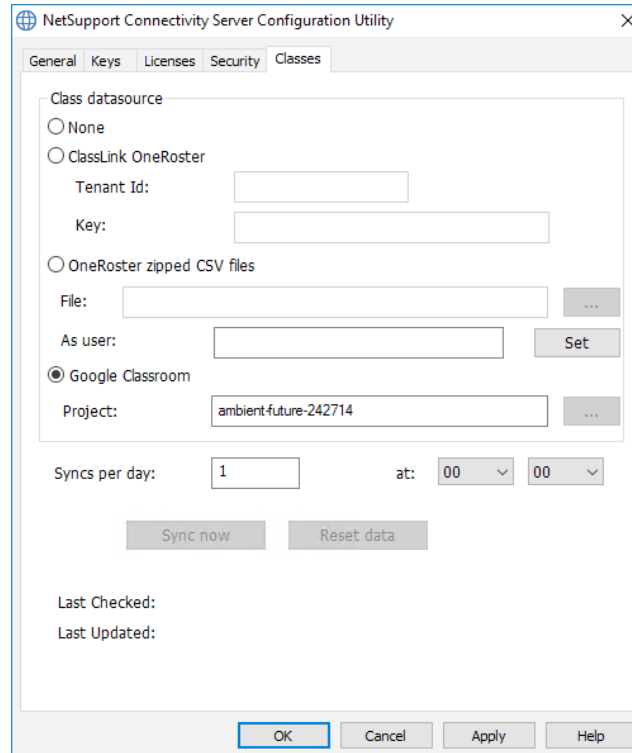
Security tab



No changes are required to be made on the Security tab.

Classes tab

Note: This option is only applicable if you intend to use NetSupport's SIS/MIS (Student/Management Information System) connection mode.



The screenshot shows the 'Classes' tab of the 'NetSupport Connectivity Server Configuration Utility' dialog box. It features a 'Class datasource' section with three radio button options: 'None', 'ClassLink OneRoster', and 'OneRoster zipped CSV files'. The 'ClassLink OneRoster' option is selected, with fields for 'Tenant Id' and 'Key'. The 'OneRoster zipped CSV files' option is also present, with fields for 'File', 'As user', and 'Set'. The 'Google Classroom' option is selected, with a 'Project' field containing the value 'ambient-future-242714'. Below these options, there are fields for 'Syncs per day' (set to 1) and 'at' (set to 00:00). At the bottom of the dialog, there are buttons for 'Sync now', 'Reset data', 'OK', 'Cancel', 'Apply', and 'Help'.

From version 12.60, NetSupport School allows you to import school timetable/roster data directly from a SIS/MIS system. This can be done by either linking directly to the SIS/MIS data using ClassLink OneRoster/Google Classroom or by importing the data from a zip file which has been extracted from the SIS/MIS.

The NetSupport Name & Connectivity Server can be configured to provide direct integration with ClassLink OneRoster or Google Classroom, allowing access to the school's SIS classrooms and student accounts.

Class datasource

ClassLink OneRoster

Select this option to link to ClassLink OneRoster and enter your school/district's Tenant ID. For added validation, enter the matching NetSupport School Security/API Key provided in your Roster Server Portal. (The key can be found in the OneRoster Server Portal by selecting, Applications > NetSupport School > API Key and Secret.)

OneRoster zipped CSV files

Alternatively, you can import zipped CSV files. Click and browse to the required files.

Notes:

- The CSV files must conform to the OneRoster standard.
- The first time you configure the Connectivity Server to use OneRoster zip files, you must do a bulk export of your SIS data.

Google Classroom

Select this option to link to Google Classroom. Click and browse to one of the JSON files that you have copied to the machine (both files must be present, but either file can be selected). *Click here* for information on how to set up a Google Classroom Project and create the required JSON files.


Click **Apply** and you will be prompted to sign into Google G Suite with administrator credentials and grant access to NetSupport School.

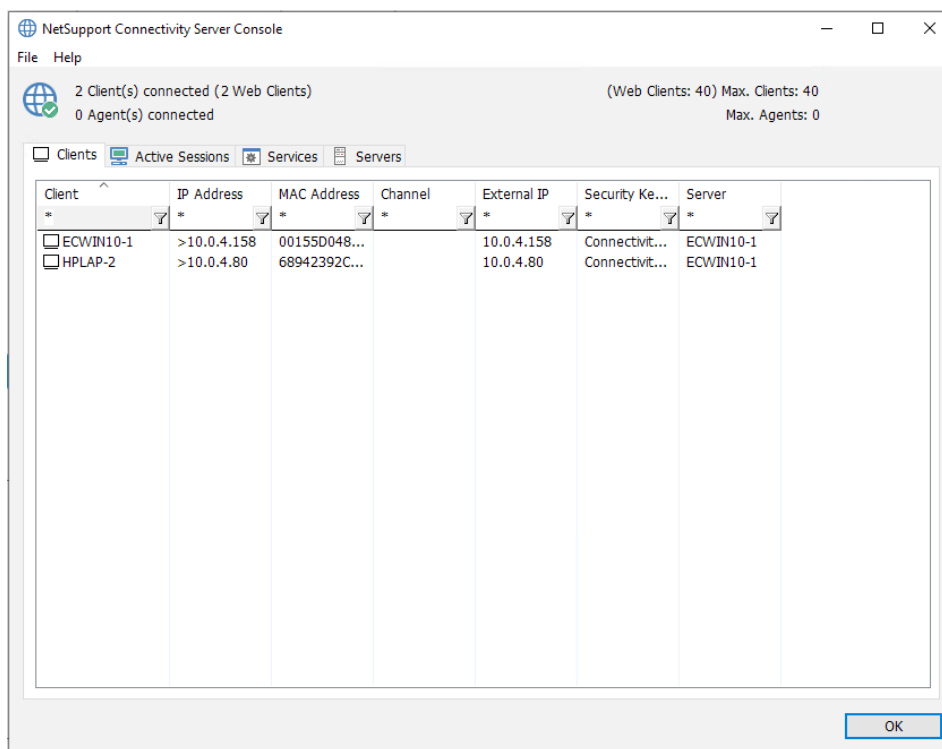
Syncs per day

By default, the Connectivity Server will sync with OneRoster or Google Classroom once a day. This can be amended by entering a different value here, you can also specify the time the sync will take place.

Click **Sync now** to synchronise the Connectivity Server. Clicking **Reset Data** will clear all previous data stored and if there is a lot of data to download, may take some time.

Once you are happy that the Name & Connectivity Server is configured as required, click **OK**.

The NetSupport Connectivity Server Console  icon should now appear in the system tray. If any of the settings need editing, right-click on the icon and select **Configure Connectivity Server**. Double-click the icon to open the Connectivity Server Console window. This details the activity during a NetSupport School-managed lesson, i.e. Tutor and Student devices communicating through the Server.



You can now configure the required NetSupport School components to communicate with the NCS.

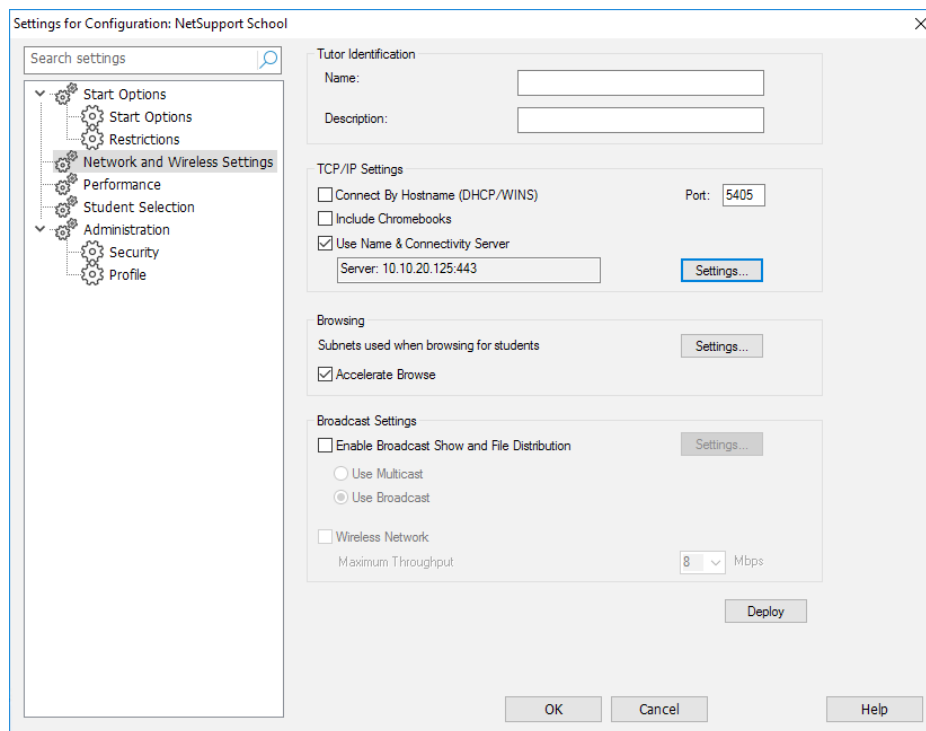
Configuring the NetSupport School Windows Tutor and Tech Console to use the NCS

The following instructions assume that the Tutor and Tech Console components are already installed on the required Windows machines.

1. Open the NetSupport School Tutor or Tech Console.
2. To configure the Tutor, click **Options** on the right-hand side of the Tutor Console, select **Network Settings** from the drop-down menu and choose **Network and Wireless Settings**.

Or

To configure the Tech Console, click **Options** on the right-hand side of the Tech Console, select **Settings** from the drop-down menu and choose **Network and Wireless Settings**.



3. Select **Use Name & Connectivity Server** and click **Settings**. Enter the IP address of the machine where the Name & Connectivity Server was installed, the port number (if different from the default 443 port), and click **Set** to enter the matching security key entered when installing the Server. An encrypted value will be displayed.

Note: When **Use Name & Connectivity Server** is enabled please ensure **Connect By Hostname (DHCP/WINS)** is disabled to avoid conflicts.

4. Click **OK** to apply the settings.

By default, the Tutor and Tech Console settings are stored in the registry for each logged-on user in the following locations:

HKEY_CURRENT_USER\Software\NetSupport Ltd\PCICTL\ConfigList\NetSupport School

HKEY_CURRENT_USER\Software\NetSupport Ltd\PCICTL\ConfigList\NetSupport Tech Console

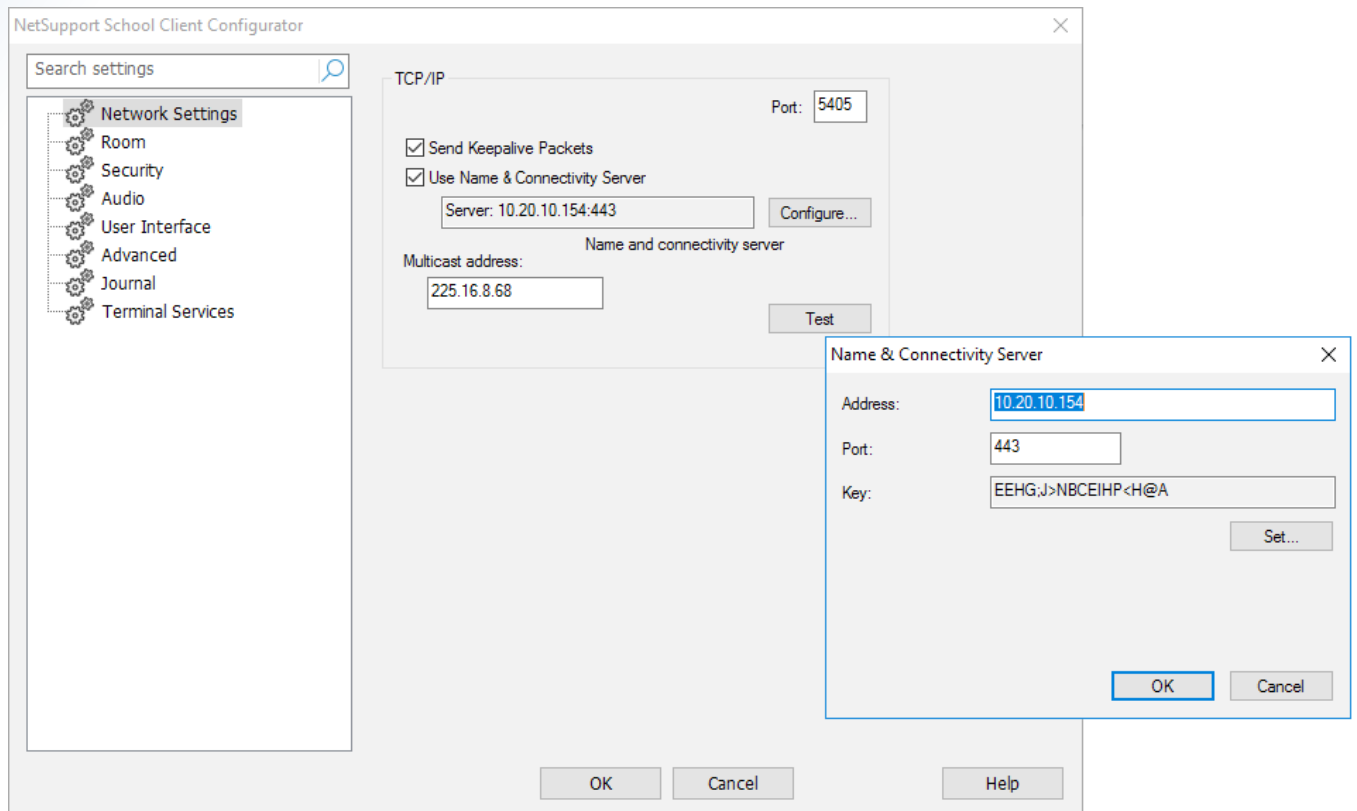
Configuring NetSupport School Student devices to use the NCS

The following instructions explain how to configure the NetSupport School Student for Windows, and assumes the Student component is already installed on the devices.

1. In the NetSupport School program group, select the NetSupport School Student Configurator.

Or

Launch the Student Configurator exe file, PCICFGUI, from the NetSupport School Program Files (x86) folder.



2. In Network Settings, select **Use Name & Connectivity Server** and click **Configure**. Enter the IP address of the machine where the Name & Connectivity Server is installed, the port number (if different from the default 443 port), and click **Set** to enter the matching security key entered when installing the Server. An encrypted value will be displayed. Click **OK**.
3. Click **OK** to apply the settings. Student devices will need to be restarted for the changes to take effect.

By default, the Student component settings are stored in the client32u.ini file located in the following folder:

C:\Program Files (x86)\NetSupport\NetSupport School

Applying the NCS settings to NetSupport School components by Group Policy

The Name & Connectivity Server settings can also be applied to the Tutor, Tech Console and Student Configurations via Group Policy.

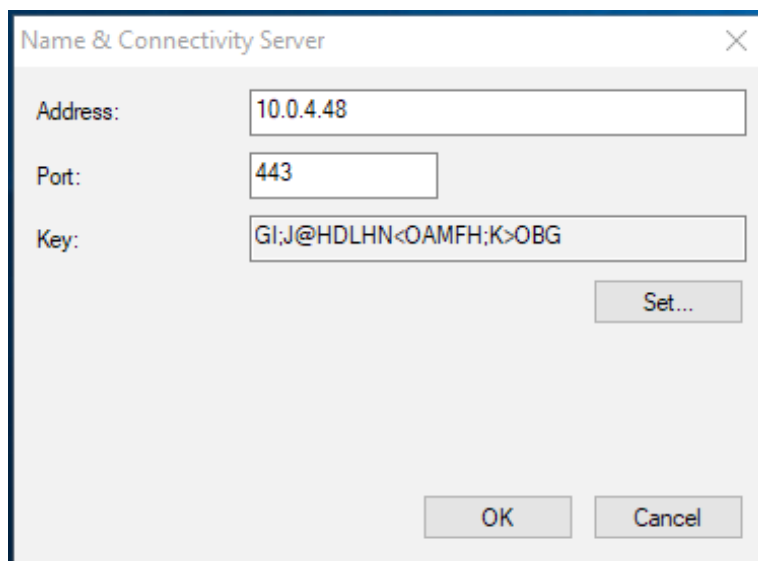
Machine and user-based NetSupport School ADMX/ADML files are provided with the software and are available on a machine that has the NetSupport School Tutor installed – in the folder:

C:\Program Files (x86)\NetSupport\NetSupport School\ADM Templates\ADMX

Applying the Name & Connectivity Server settings to the components using the machine-based ADMX files via a Group Policy will ensure that the settings will be the same for all users that log on to the Tutor and Student devices.

Additional information for creating and applying the NetSupport School configuration via a Group Policy can be found in the following technical document: [Configuring the NetSupport Connectivity Server details for NetSupport School Students and Tutors by Group Policy \(GPO\)](#).

Note: When applying the NCS security key using a Group Policy, you must enter the encrypted value that was returned when originally configuring the Tutor, Tech Console and Student components rather than the plain text version. The encrypted value is different for each component so care must be taken to ensure that the correct encrypted value is used in the Group Policies, as shown in the example below.



The screenshot shows a dialog box titled "Name & Connectivity Server" with a close button (X) in the top right corner. It contains three input fields: "Address:" with the value "10.0.4.48", "Port:" with the value "443", and "Key:" with the value "GI;J@HDLHN<OAMFH;K>OBG". There is a "Set..." button to the right of the Key field. At the bottom of the dialog are "OK" and "Cancel" buttons.

Troubleshooting connectivity issues

The main cause of connection issues between the Name & Connectivity Server and NetSupport School components are that the IP address, port number and Connectivity Server key do not match on all devices. This should be checked first by re-entering the details and restarting the Name & Connectivity Server process and Student components.

If the above does not resolve the connectivity issues, investigate the following:

1. Is the Name & Connectivity Server running?

In normal operation, a NetSupport Connectivity Server Console icon will be displayed in the system tray on the machine the Name & Connectivity Server is installed on.

The Name & Connectivity Server runs as an Automatic Startup Type service called Gateway32, so check that this service is running.

2. Is the Name & Connectivity Server listening?

A GWxxx.log file is created on the Name & Connectivity Server that records the Gateway32 service start up and the machine names of the Tutor/Tech Console and Student devices connecting to the server.

The GWxxx.log files are located in the C:\Program Files (x86)\Common Files\NSL\Connectivity Server folder by default.


If an entry such as "Failed to bind to listening port..." is seen in the log file, this is usually indicative that another application is already using the port number configured for the Name & Connectivity Server. As the default port for the Name & Connectivity Server is 443, this will normally be the Web Server (IIS) role that may also be installed on the server.

Running "netstat -an | more" from a command prompt will list the ports in use on the server.

If a port conflict is the issue, either reconfigure the Name & Connectivity Server to use an alternative port number or reconfigure/disable the application that is causing the conflict.

3. Are the Students connected to the Name & Connectivity Server?

There are two ways to confirm if the Tutor/Tech Console and Student devices are connected to the Name & Connectivity Server.

The first is to right-click the NetSupport Connectivity Server Console icon  in the system tray on the server and select **Open**. This will open the Console window.

Selecting the Clients tab will display the information for all of the devices that are currently connected to the Name & Connectivity Server.

The second is to use the entries in the GWxxx.log file to see the machine names of the devices that have connected to the server.

4. Has the maximum number of device connections been reached?

The Name & Connectivity Server restricts the number of devices that are able to concurrently connect to the server based on the number of Clients in the NSM.LIC file applied on the server.

A 'License Limit Exceeded' entry will be seen in the GWxxx.log file if more devices than are allowed in the NSM.LIC licence file attempt to connect to the Name & Connectivity Server.

5. Is the student service running?

With a default configuration applied, a NetSupport School Client icon will be seen in the system tray on the Student devices.

The Student component runs as an automatic startup type service called Client32, so check that this service is running on the device.

6. Is the Name & Connectivity Server visible to the Tutor/Tech Console and Student devices?

If no Tutor/Tech Console or Student devices are seen on the Clients tab on the Name & Connectivity Server, it is possible to use two connection tests from the devices to confirm that the NCS is visible on the network:

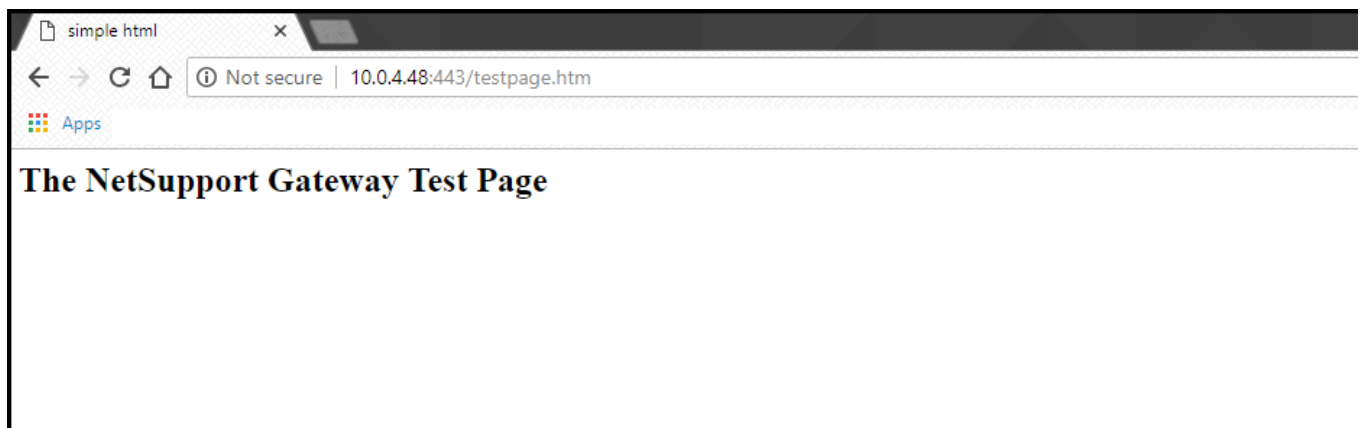
Using the Name and Connectivity Server test page

On the Tutor/Tech Console or Student device, open a browser and enter the following URL:

`http://[ServerIPAddress]:[PortNo]/testpage.htm`

(Where [ServerIPAddress] is the IP address of the Name & Connectivity Server, and [PortNo] is the port number that it is configured to use.)

If the device can successfully reach the Name & Connectivity Server test page, a NetSupport Gateway Server page will be displayed in the browser.



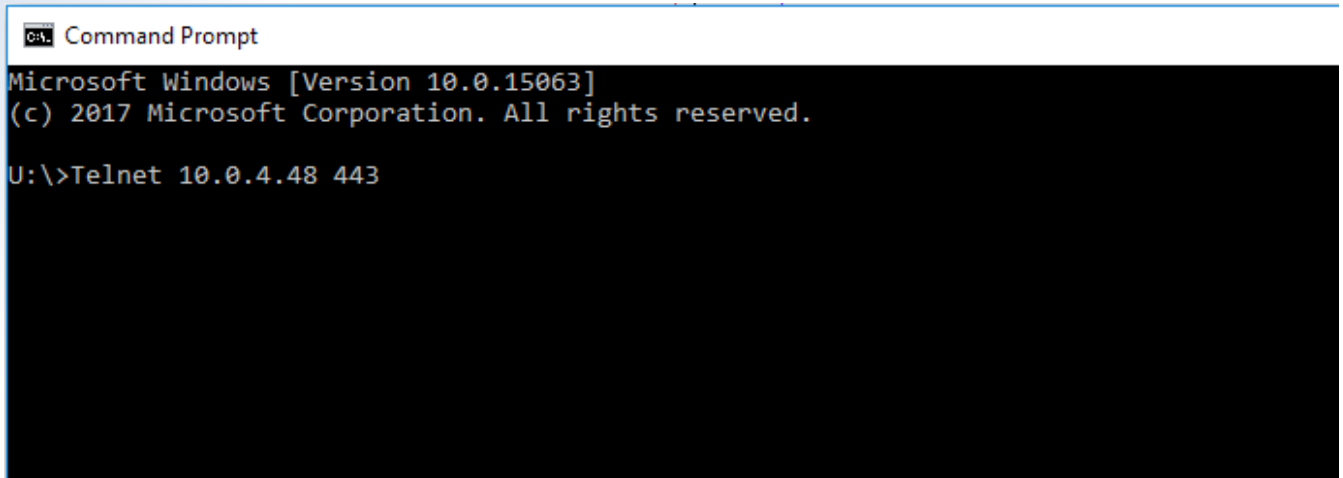
Using the Telnet connection test

Note: if the Telnet Client is not installed on the device, it can be enabled in the Control Panel | Programs and Features | Turn Windows features on or off section.

On the Tutor/Tech Console or Student device, open a command prompt and enter in the following command and press **Enter**:

```
telnet [ServerIPAddress] [PortNo]
```

(Where [ServerIPAddress] is the IP address of the Name & Connectivity Server, and [PortNo] is the port number that it is configured to use.)

A screenshot of a Windows Command Prompt window. The title bar reads "Command Prompt". The text inside the window is as follows:

```
Microsoft Windows [Version 10.0.15063]
(c) 2017 Microsoft Corporation. All rights reserved.

U:\>Telnet 10.0.4.48 443
```

The rest of the window is blank, indicating a successful connection to the Name & Connectivity Server port.

If the device can successfully connect to the Name & Connectivity Server port, the command prompt window will go blank.

If either of these two tests fails, the device is being prevented from connecting to the Name & Connectivity Server on the network. This is usually due to firewall/endpoint or restrictions on the device or the network.